

Under the Patronage of His Excellency **Eng. Abdulrahman bin Abdulmohsen AlFadley**
Minister of Environment, Water & Agriculture

منتدى المياه السعودي
saudi water forum

SWF 2024



ENHANCING OPERATIONAL ASSET EFFICIENCY & SUSTAINABILITY

NWC Asset Strategy



29 April – 01 May 2024



Hilton Riyadh Hotel & Residences
Riyadh, Saudi Arabia

Organized by

وزارة البيئة والمياه والزراعة
Ministry of Environment Water & Agriculture



المؤسسة العامة لتحلية المياه المالحة
Saline Water Conversion Corporation (SWCC)



شركة المياه الوطنية
National Water Company



الشركة السعودية لشركات المياه
Saudi Water Partnership Company



المؤسسة العامة للمياه
Saudi Water Partnership Company



منظم المياه
Water Regulator



المركز الوطني لكفاءة وترشيد المياه
NATIONAL WATER EFFICIENCY AND CONSERVATION CENTER
MAEE



Organizing Partners

PRESENTER BIOGRAPHY



- Name: **Mohammed Alghamdi**
- Major: **Chemical Engineering**
- Graduated: **KFUPM**
- Employer: **NWC**
- Total Experience: **+17 years**
- Title: **Corporate Asset Management General Manager**

Eng. Mohammed Alghamdi, NWC Corporate Asset Management General Manager, has more than 17 years of total experience. He holds a bachelor's degree in chemical engineering from the King Fahd University of Petroleum and Minerals (KFUPM). He has gained wide experience by working with different companies, like Saudi Aramco.



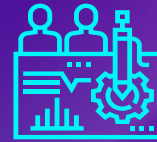
OUTLINES



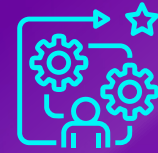
**Introduction to NWC
Operations**



**Understanding of
Asset Management**



**Key Components of
NWC Asset Strategy**



**Conclusion & The
Path Forward**

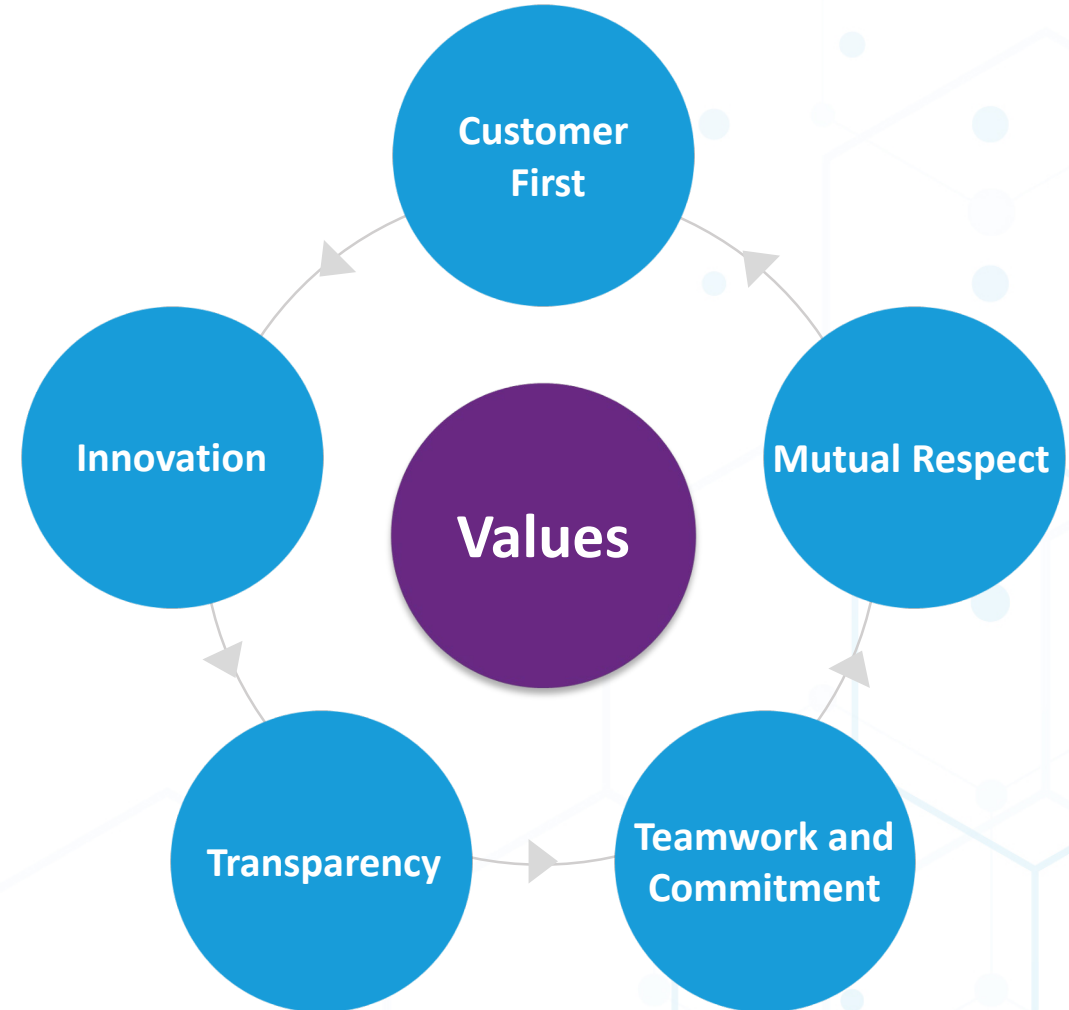
NATIONAL WATER COMPANY (NWC)

Vision

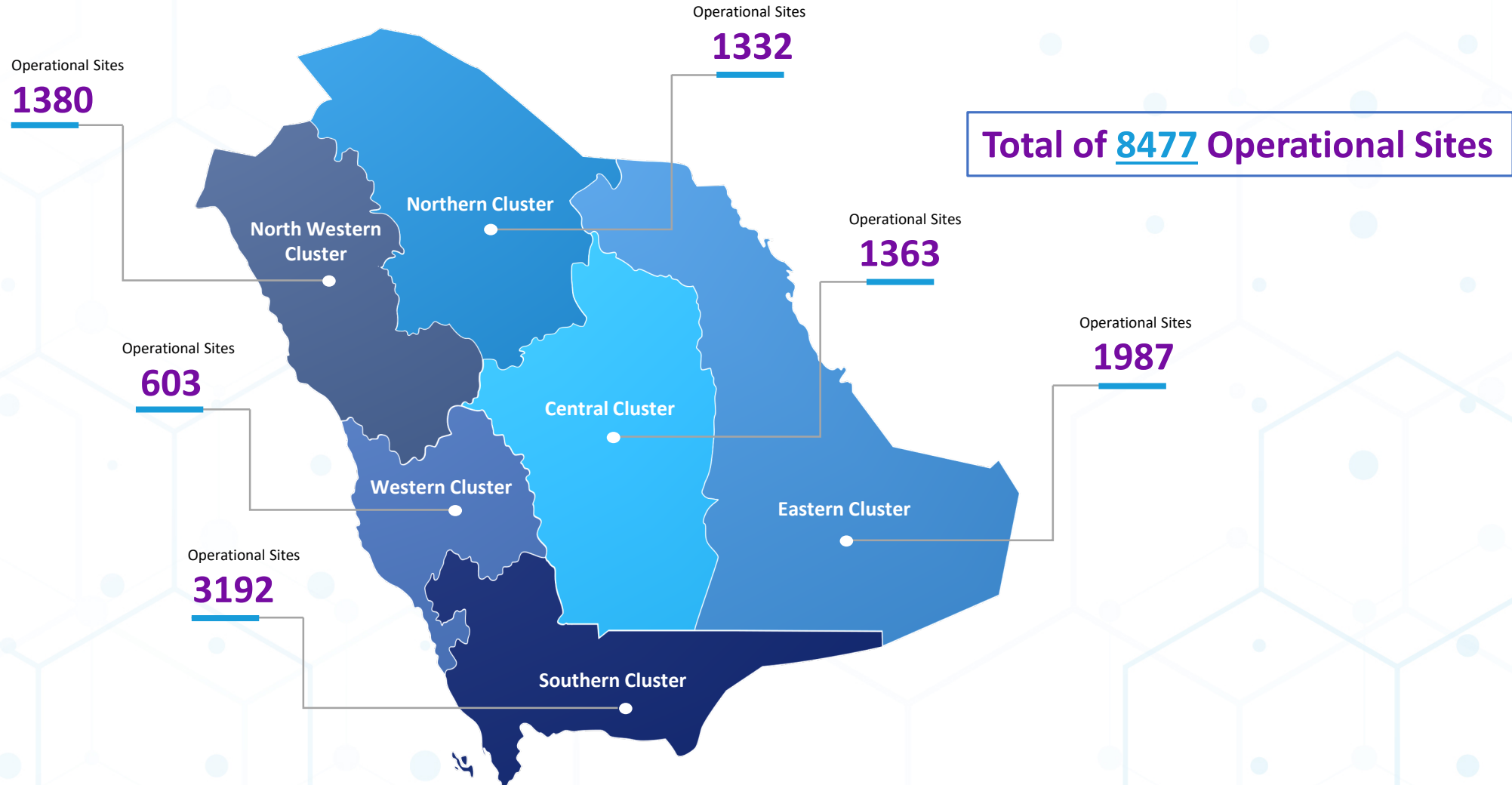
- Providing a sustainable quality water services across the Kingdom to improve life today and for the future.

Mission

- We strive to provide the best water and wastewater services and improve quality across the Kingdom in collaboration with our partners while increasing effectiveness, efficiency and financial sustainability.

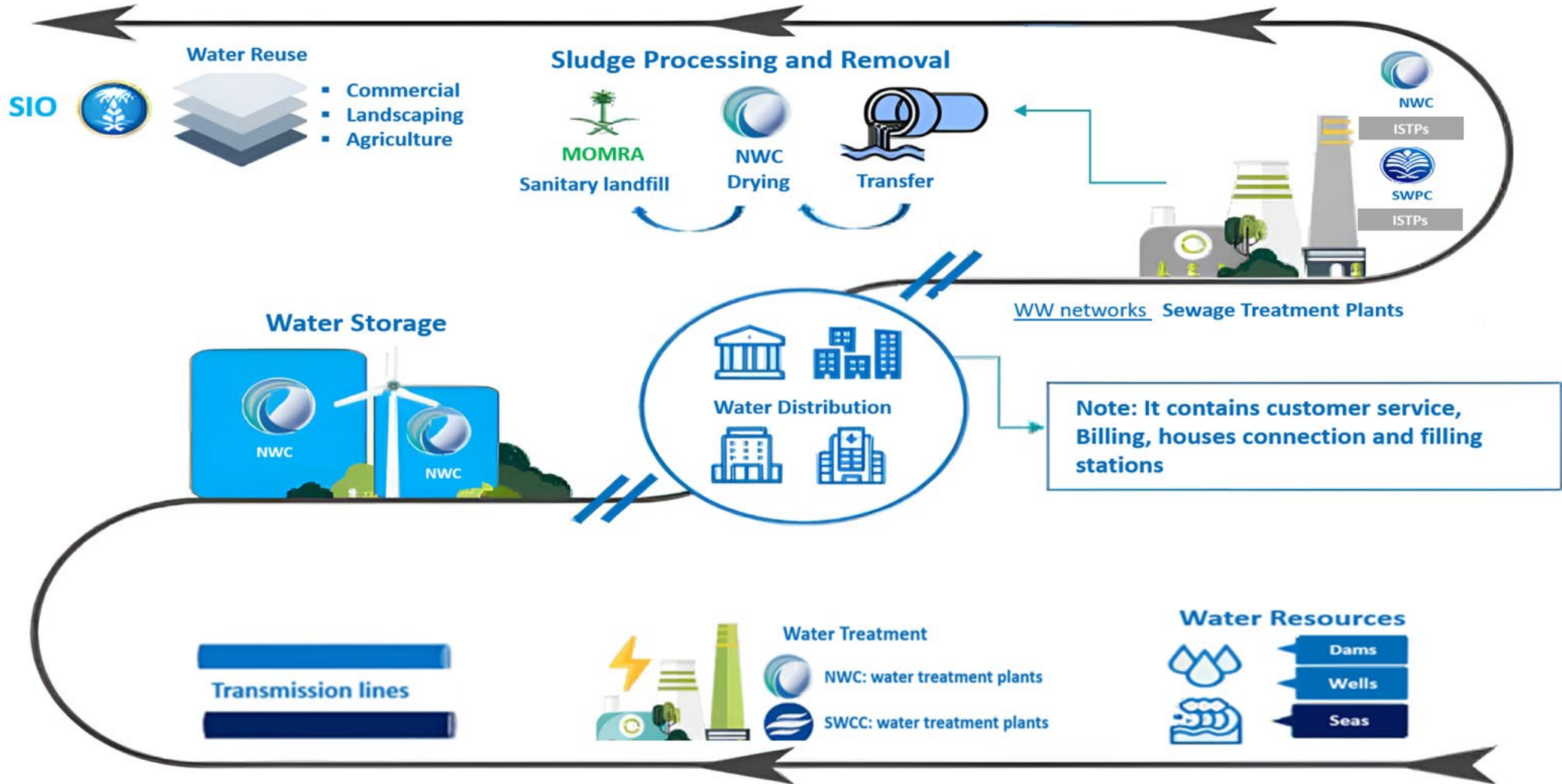


NWC OPERATIONS AREAS



NWC has six clusters, where assets are operated and maintained.

WATER FLOW CHAIN



WHAT IS ASSET MANAGEMENT?

It is a management system that handles all operational assets by setting strategies, monitoring, and controlling them from the operation level all the way to the financial and investment levels.



Traditional
'Asset Stewardship'
Approach

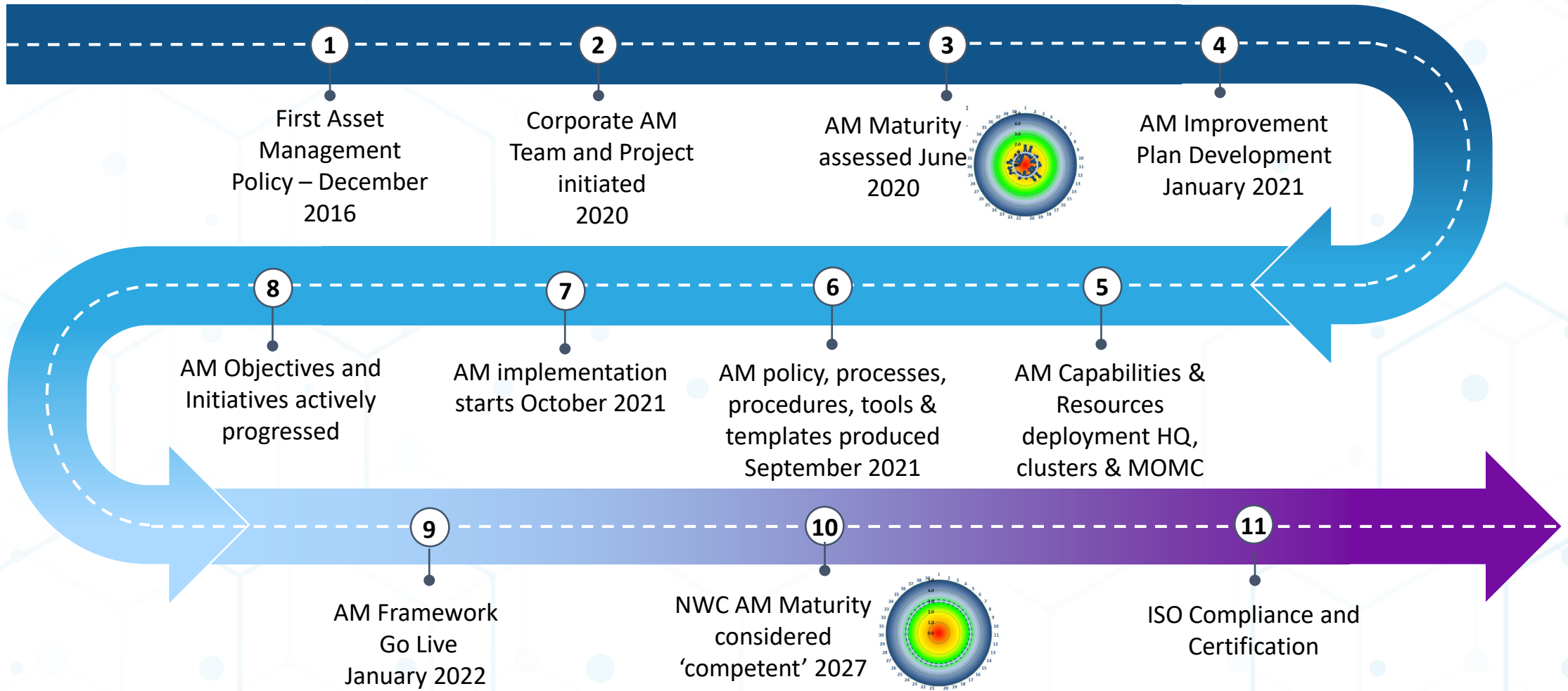
- Asset Centric
- No formal consideration of how assets contribute to objectives
- Refurbishment/Replacement based on asset age and condition
- May limit the adoption of strategic solutions, system optimization and cost-effective operational solutions to defer work; thus, overstating capital solutions

'Service Focused
Approach'

- Customer Centric
- Considers the consequences of asset failure on objectives
- Refurbishment/Replacement based on risk to service delivery
- Considers the capability of a system of assets and operators to deliver services



NWC ASSET MANAGEMENT JOURNEY



The Path Forward



Under the Patronage of His Excellency **Eng. Abdulrahman bin Abdulmohsen AlFadley**
Minister of Environment, Water & Agriculture

منتدى المياه السعودي
saudi water forum

SWF 2024



THANK YOU!



29 April – 01 May 2024



Hilton Riyadh Hotel & Residences
Riyadh, Saudi Arabia

Organized by

وزارة البيئة والمياه والزراعة
Ministry of Environment Water & Agriculture



المؤسسة العامة لتحلية المياه المالحة
Saline Water Conversion Corporation (SWCC)



شركة المياه الوطنية
National Water Company



الشركة السعودية لشركات المياه
Saudi Water Partnership Company



المؤسسة العامة للمياه
Saudi Water Partnership Company



منظم المياه
Water Regulator



المركز الوطني لكفاءة وترشيد المياه
NATIONAL WATER EFFICIENCY AND CONSERVATION CENTER
MAEE



Organizing Partners